

# Evaluation of the Santa Clara Children's Health Initiative: Key Findings

## Legislative Briefing

September 28, 2005



# Focal Evaluation Questions

---

- **What is the effect of the Children's Health Initiative (CHI) on enrollment in Medi-Cal and Healthy Families?**
- **What is the effect of Healthy Kids on the children who participate?**

---

# **Effect of CHI on Medi-Cal & Healthy Families Enrollment**

# Outcome Examined

---

- **New Entries to Medi-Cal and Healthy Families:**  
“All children enrolling in Medi-Cal or Healthy Families who have not had coverage through one of these programs in the prior 11 months”

# Measure Effect of CHI by Comparing:

---

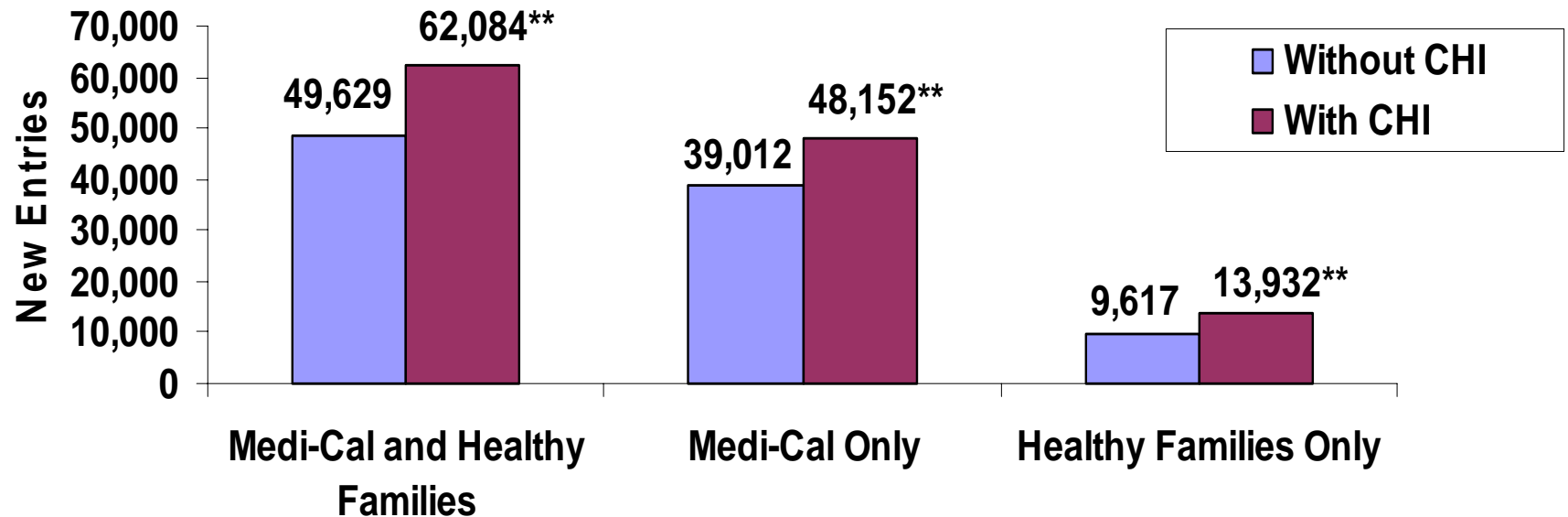
- Number of new entries in Santa Clara during first two years of CHI [2001-2002] (“With CHI”)

vs.

- Number of new entries in a comparison area over same period (“Without CHI”)

# Findings: CHI Has Had a Significant Impact

New Entries In Santa Clara County, 2001-2002

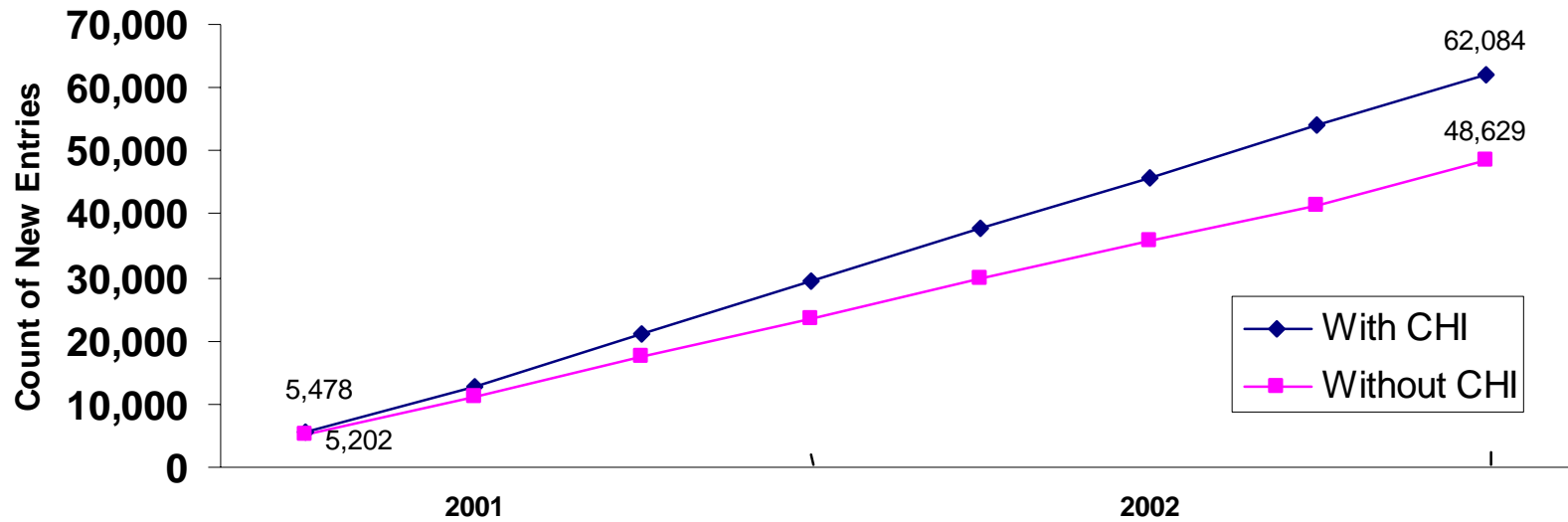


Source: Enrollment Files for the Medi-Cal and Healthy Families Programs.

\*\*Difference is significantly different from zero at the .01 level.

# Impacts are Evident Throughout the Post-CHI Period

New entries in Santa Clara, 2001-2002



Source: Enrollment Files for the Medi-Cal and Healthy Families Programs.

---

# **Effect of Healthy Kids on Children Who Participate**

# Measure Effect of Healthy Kids by Comparing:

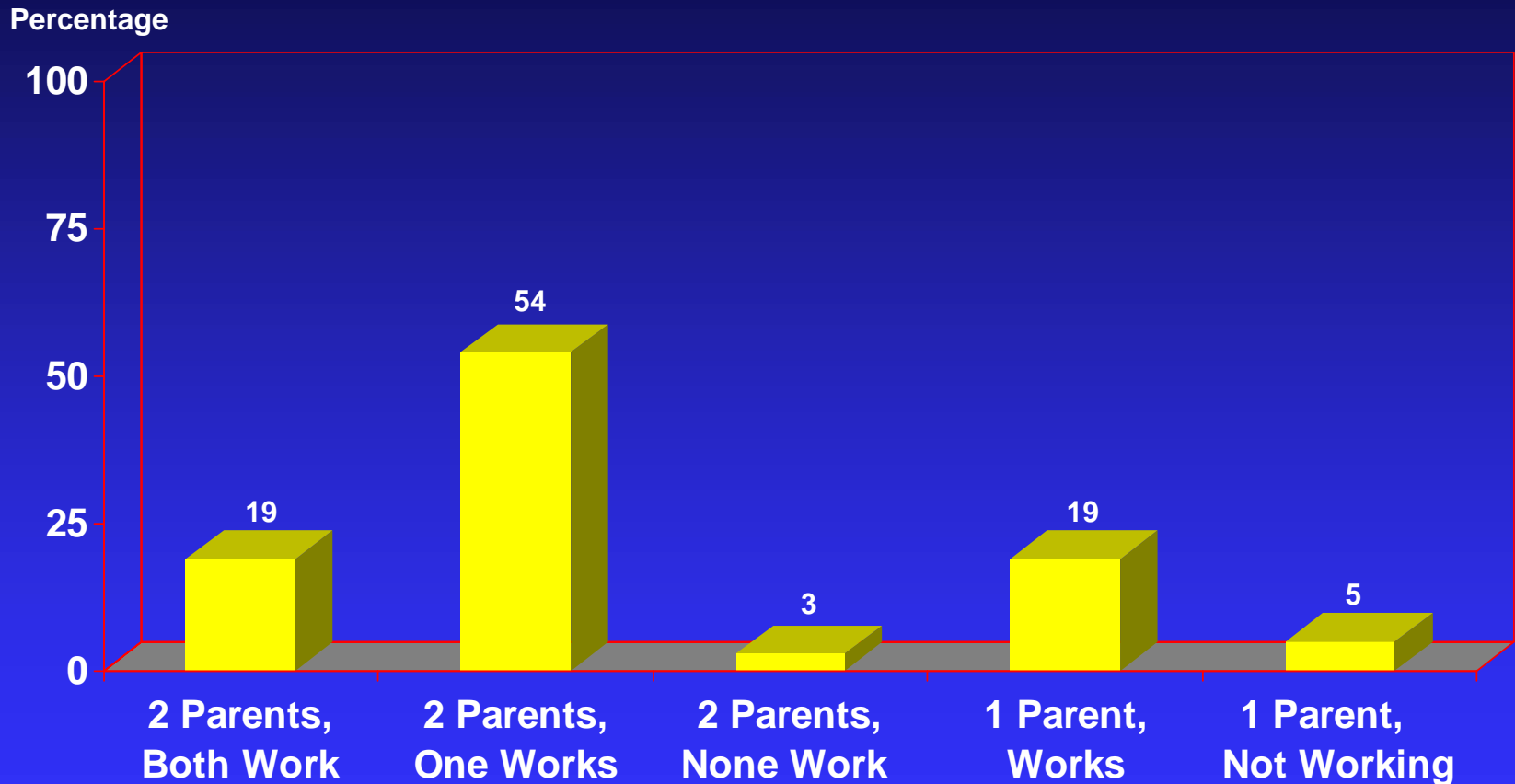
---

- **Established Enrollees (“With Healthy Kids”)**
  - Children who recently renewed eligibility at one year
  - Measure experiences during the most recent six months on Healthy Kids

**VS.**

- **Recent Enrollees (“Without Healthy Kids”)**
  - Children who recently became eligible for Healthy Kids
  - Measure experiences during six months **before** enrolling

# Most Healthy Kids Children Are From Two Parent Working Families

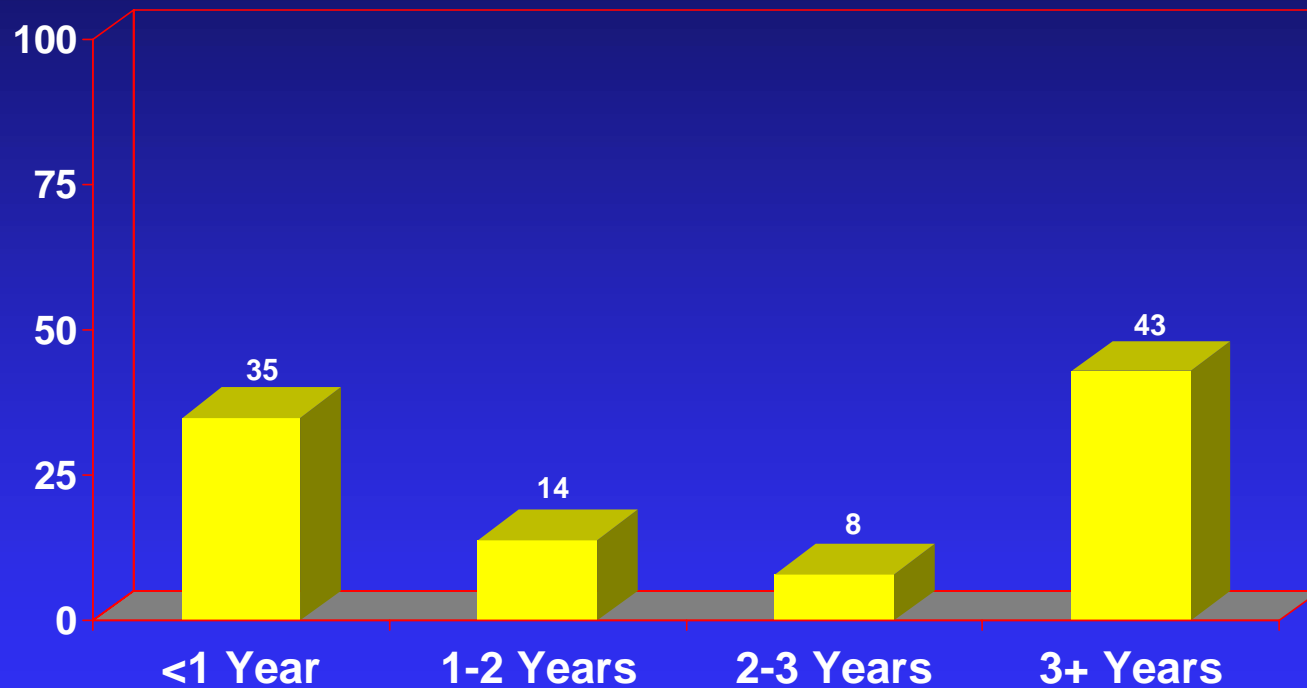


SOURCE: Tabulations from 2003-04 Survey of Healthy Kids Enrollees

# Typical Enrollee Family Has Lived in Santa Clara For Years

---

Percentage

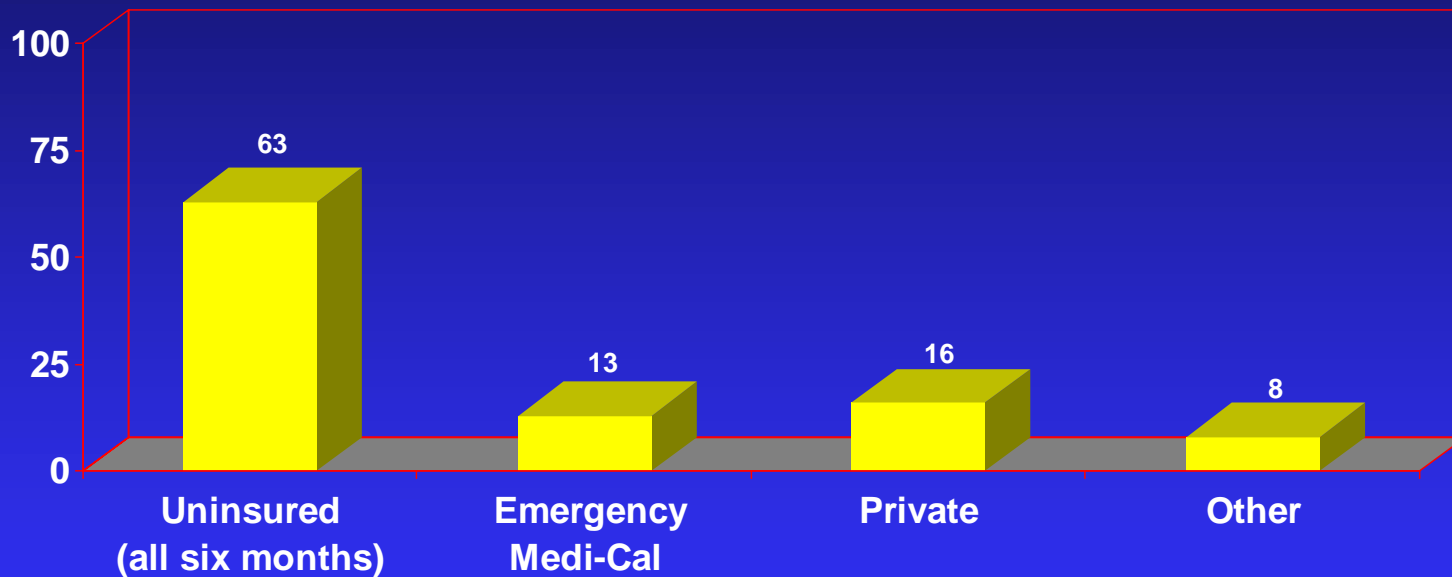


Years Residing in Santa Clara at Enrollment

SOURCE: Tabulations from 2003-04 Survey of Healthy Kids Enrollees

# Most Children Were Uninsured For At Least Six Months Before Enrolling

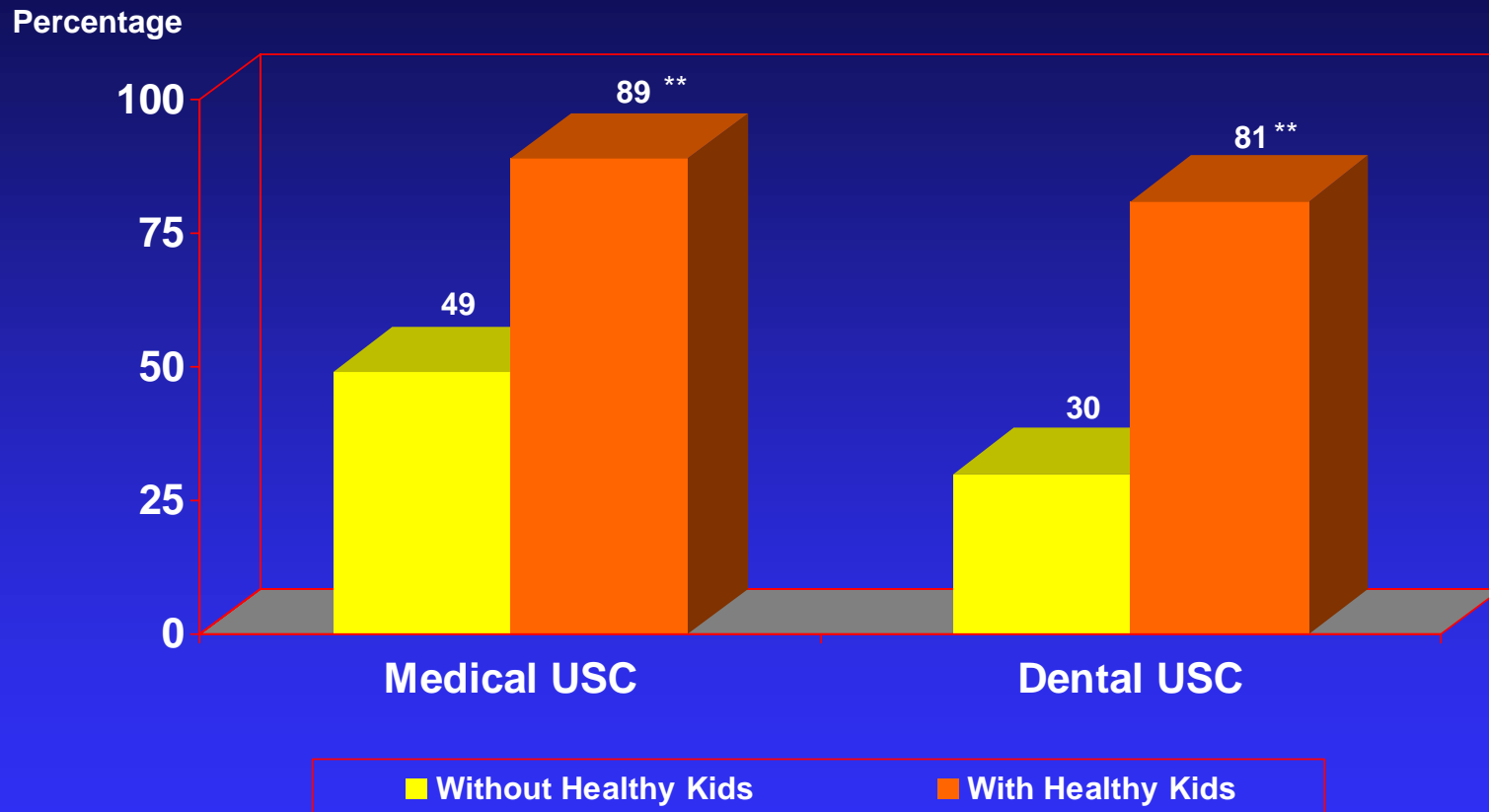
Percentage



Coverage in (any) of the six months before enrolling

SOURCE: Tabulations from 2003-04 Survey of Healthy Kids Enrollees

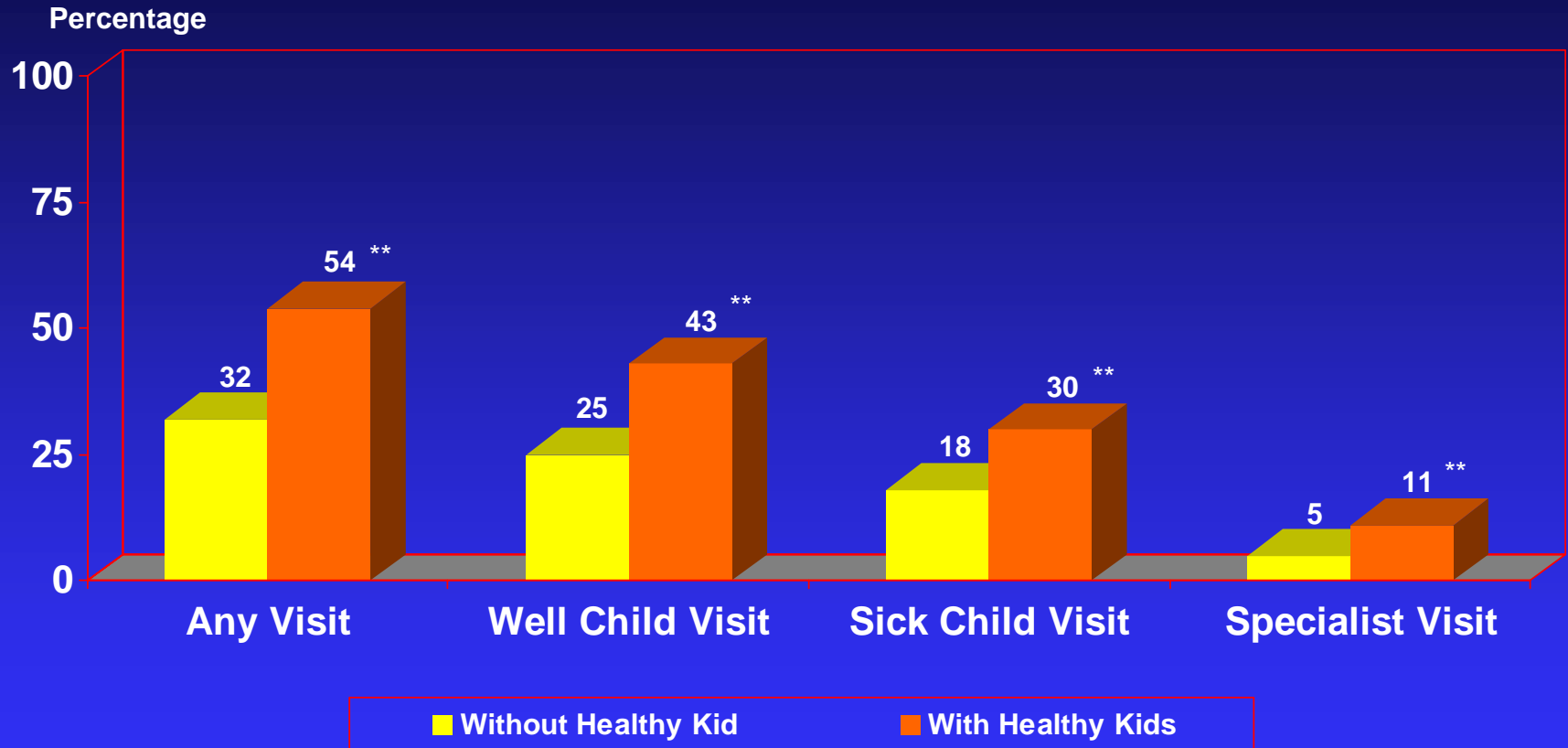
# Healthy Kids Sharply Increases Access to a Usual Source of Care (USC)



\*\* difference is statistically significant at p-value < .01

SOURCE: Tabulations from 2003-04 Survey of Healthy Kids Enrollees

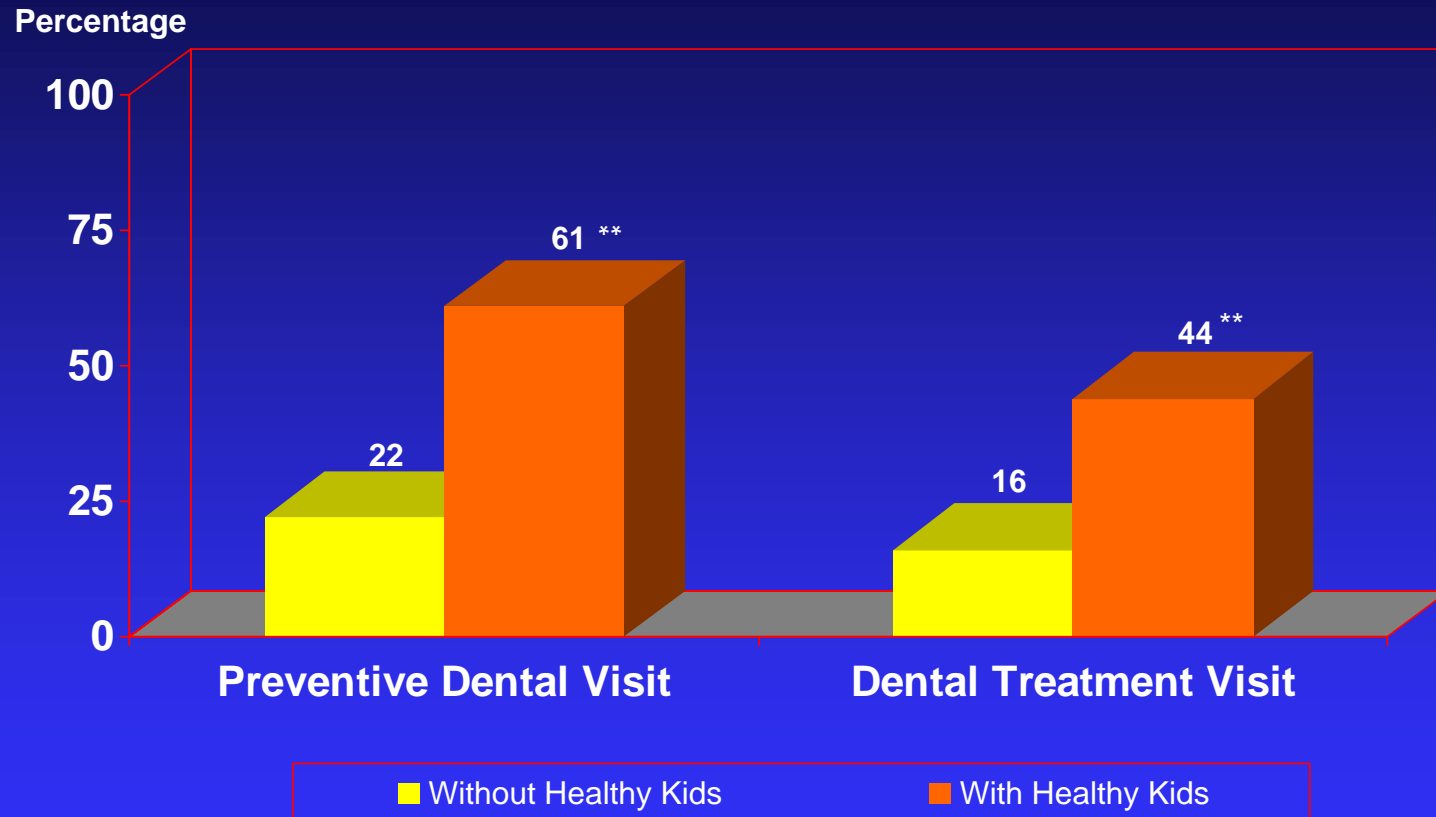
# Healthy Kids Significantly Increases Medical Care Visits



\*\* difference is statistically significant at p-value < .01; \* significant at p-value <0.05

SOURCE: Tabulations from 2003-04 Survey of Healthy Kids Enrollees

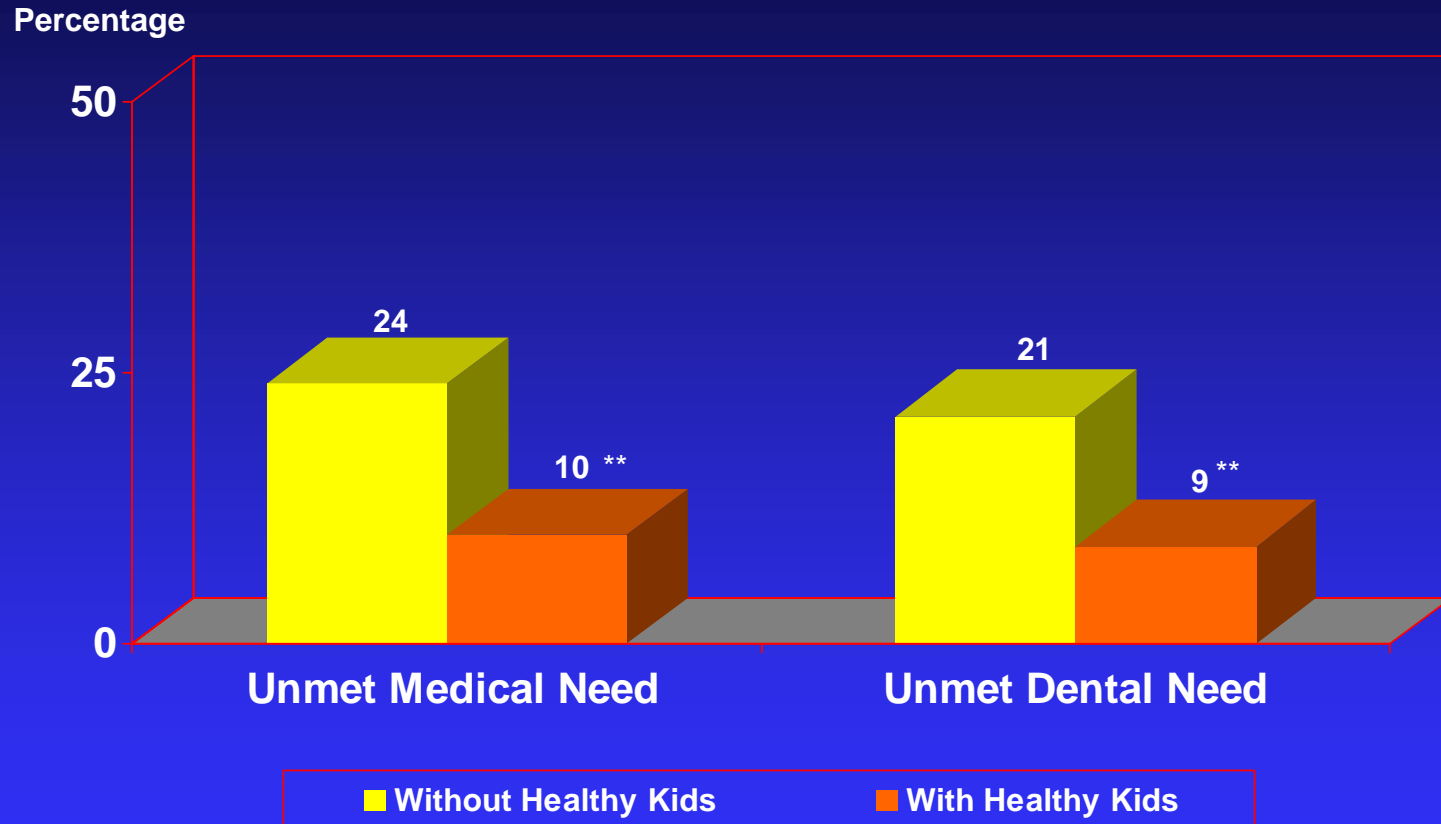
# Healthy Kids Also Sharply Increases the Use of Dental Services



\*\* difference is statistically significant at p-value < .01; \* significant at p-value <0.05

SOURCE: Tabulations from 2003-04 Survey of Healthy Kids Enrollees

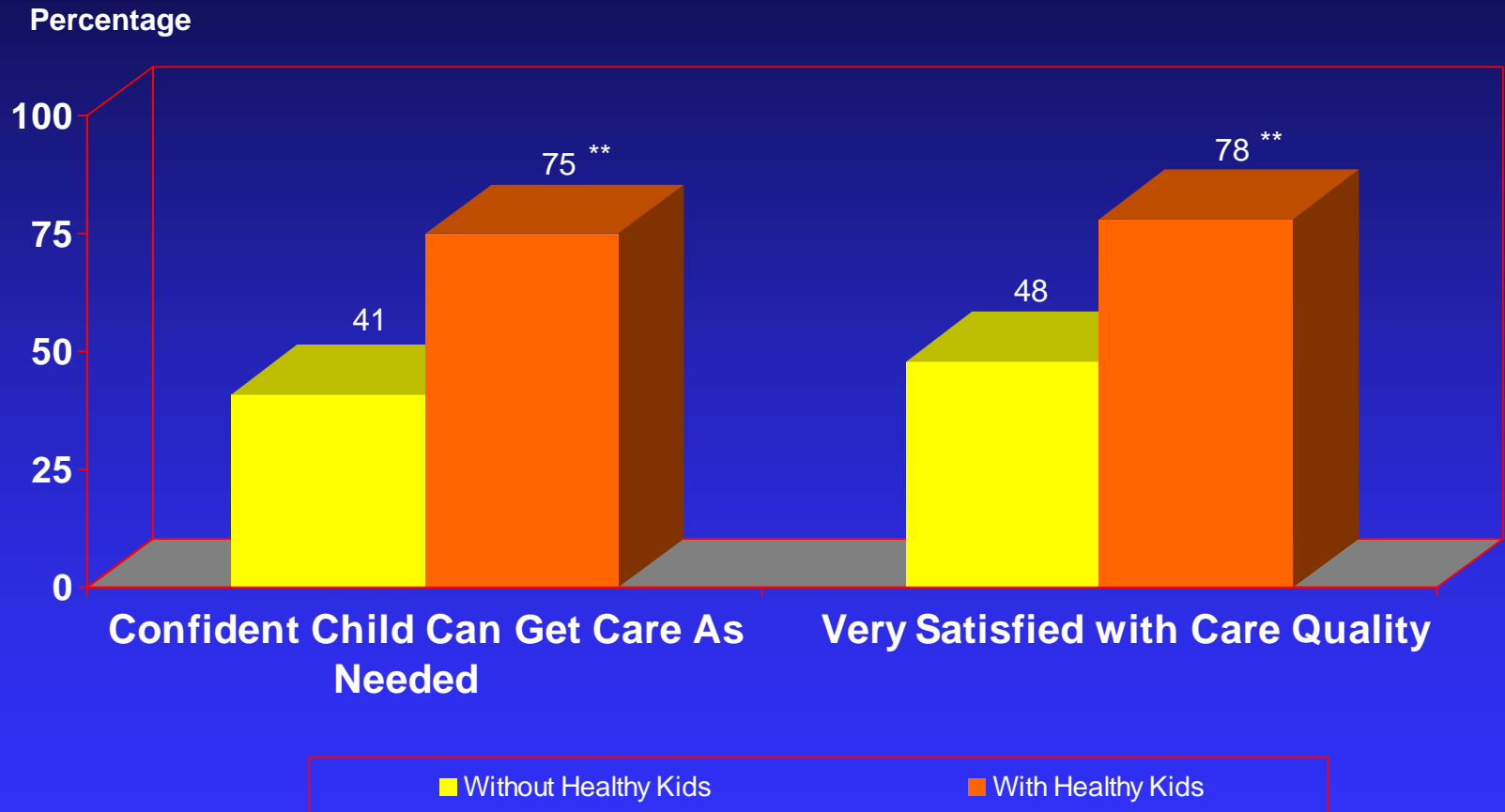
# Healthy Kids Reduces Levels of Unmet Need



\*\* difference is statistically significant at p-value < .01; \* significant at p-value <0.05

SOURCE: Tabulations from 2003-04 Survey of Healthy Kids Enrollees

# Healthy Kids Increases Confidence and Satisfaction



\*\* difference in statistically significant at p-value < .01; \* significant at p-value <0.05

SOURCE: Tabulations from 2003-04 Survey of Healthy Kids Enrollees

# Summary

---

- **CHI dramatically increased Medi-Cal and Health Families enrollment in Santa Clara County**
- **Healthy Kids greatly improves access to and use of medical and dental care**
- **Healthy Kids sharply reduces unmet needs for both medical and dental services**